

Specifications

MODEL	Z-62/40	
Measurements	US	Metric
Working height maximum*	67 ft 11 in	20.87 m
Platform height maximum	61 ft 11 in	18.87 m
Horizontal reach maximum	40 ft 5 in	12.42 m
Up and over clearance maximum	25 ft 7 in	7.8 m
A Platform length - 8 ft / 6 ft model	3 ft / 2 ft 6 in	0.91 m / 0.76 m
B Platform width - 8 ft / 6 ft model	8 ft / 6 ft	2.44 m / 1.83 m
C Height - stowed	8 ft 4 in	2.54 m
Height - transport (jib tucked under)	9 ft 6 in	2.90 m
D Length - stowed	30 ft 3 in	9.25 m
Length - transport (jib tucked under)	24 ft 10.5 in	7.58 m
E Width	8 ft 2 in	2.49 m
F Wheelbase	8 ft 2 in	2.49 m
G Ground clearance - center	1 ft 4 in	41 cm

Productivity

Lift capacity	500 lbs	227 kg
Platform rotation	180°	
Vertical jib rotation	135°	
Turntable rotation	360° continuous	
Turntable tailswing	zero	
Drive speed - stowed	3.0 mph	4.8 km/h
Drive speed - raised**	1.0 ft/s	0.3 m/s
Gradeability - 2WD - stowed***	30%	30%
Gradeability - 4WD - stowed***	45%	45%
Turning radius - 2WS inside	9 ft 2 in	2.80 m
Turning radius - 2WS outside	18 ft 9 in	5.57 m
Turning radius - 4WS inside	4 ft 5 in	1.35 m
Turning radius - 4WS outside	11 ft 11 in	3.6 m
Controls	12V DC proportional	
Tires	355/55D 625	

Power

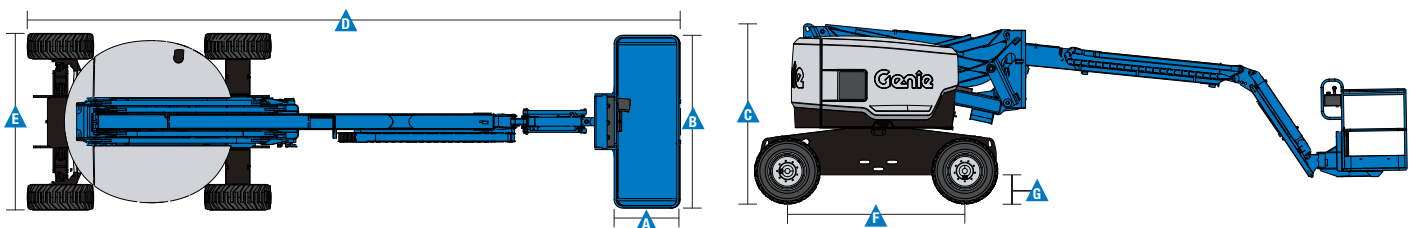
Power source	49 hp (35.79 kW) Deutz diesel T4f D2.9L4*****	
	48 hp (35.79 kW) Perkins diesel T4f 404F-22*****	
	60 hp (56 kW) Ford gas/LPG MSG425	
Auxiliary power unit	12V DC	
Hydraulic tank capacity	35 gal	132.5 L
Fuel tank capacity - diesel	36 gal	136.3 L
- gas	20 gal	75.7 L

Weight****

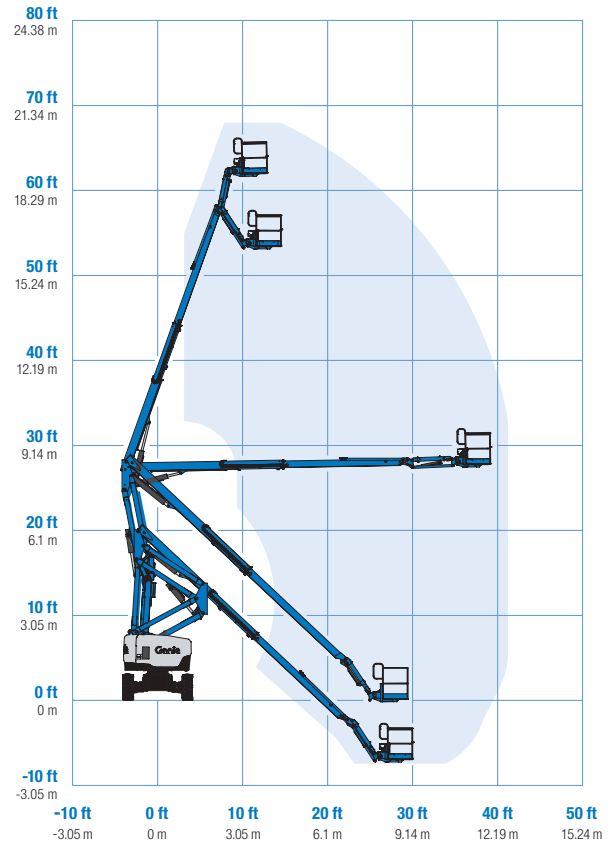
2WS	22,155 lbs	10,070 kg
4WS	23,055 lbs	10,480 kg

Standards Compliance

ANSI A92.5, CSA B354.4, EN 280, AS 1418.10



Range Of Motion Z-62/40



* The metric equivalent of working height adds 2 m to platform height. U.S. adds 6 ft to platform height.

** In lift mode (platform raised), the machine is designed to operate on firm, level surfaces only.

*** Gradeability applies to driving on slopes. See operators manual for details regarding slope ratings.

**** Weight will vary depending on options and/or country standards.

***** Tier 4f engines available in US only.

Features

Standard Features

Measurements

- 67 ft 11 in (12.87 m) working height
- 40 ft 5 in (12.42 m) horizontal reach
- 26 ft 8 in (8.13 m) up and over clearance
- Up to 500 lbs (227 kg) lift capacity

Productivity

- Self-leveling platform
- Hydraulic platform rotation
- Proportional joystick controls
- Drive enable
- AC power cord to platform
- Horn
- Hour meter
- Tilt alarm
- Descent alarm
- Zero tailswing
- 360° continuous turntable rotation
- Locking turntable covers
- Positive traction drive
- 2 speed wheel motors
- Hydraulic oil cooler
- Telematics ready connector

Power

- 12V DC auxiliary power
- Engine protection package
- Anti-restart engine protection
- Auto engine fault shutdown
- Intake air heater (Deutz engine)

Easily Configured To Meet Your Needs

Platform Options

- Steel 8 ft (2.44 m) (standard)
- Steel 6 ft (1.83 m)
- Steel 8 ft (2.44 m) tri-entry

Jib

- 5 ft (1.52 m) jib boom

Engine Options

- 49 hp (35.79 kW) Deutz diesel T4f* (standard)
- 48 hp (35.79 kW) Perkins diesel T4f*
- 60 hp (56 kW) Ford gas/LPG

Drive Options

- 2WD
- 4WD
- 4WS

Axle Options

- Active oscillation (standard on 4WD)
- Non-oscillating (2WD only)

Tire Options

- Rough terrain air-filled (standard)
- Rough terrain foam-filled
- High flotation air-filled
- Sealant treated air-filled
- Rough terrain non-marking (air or foam-filled)

Options & Accessories

Productivity Options

- Platform swing gate
- Half mesh platform inserts with swing gate
- Platform top auxiliary rail
- Welder package
- Welder Ready package
- Air line to platform
- Biodegradable hydraulic oil
- Deluxe Hostile environment kit
- Aircraft protection package (6ft platform only)
- Thumb rocker steer
- Pipe cradle (pair)
- Alarm package
- Panel cradle package
- Lockable platform control box covers
- Tow package
- Work light package
- Operator Protective Structure**
- Operator Protective Alarm
- Fall Arrest Bar

Power Options

- Engine gauge package (standard on T4f engines)
- AC generator packages (110V/60Hz 220V/50Hz, 3000W)
- Cold Weather Packages
- Diesel scrubber/spark arrestor (catalytic muffler) (not available on T4f engines)
- LPG tank 33.5 lbs (15.19 kg) capacity



* Also available as Tier 4 in limited regions
** Available through aftermarket parts only

Genie United States

6464 185th Ave. NE
Redmond, WA 98052
Telephone +1 (425) 881-1800
Toll Free in USA/Canada +1 (800)-536-1800
Fax +1 (425) 883-3475

Distributed By:

